

# TH-912

ORAL IRRIGATOR



## EN Operating Instructions

Thank you for purchasing TH-912 oral irrigator from B.Well. The appliance is helpful for effective cleaning of space between teeth and plaque removal. It precludes dental tartar occurrence and is perfect for prevention of caries and periodontal diseases. TH-912 oral irrigator is a small unit for oral care if you have dental bridges, implants, crowns and brackets. It can also be used for gum massage that improves blood circulation and promotes gum healing. Three operating modes ensure the maximum efficiency of the unit.

### 1. SAFETY PRECAUTIONS

#### ⚠ WARNING!

#### Never use the following as solutions for oral irrigation:

- Substances and solutions containing suspended particles (decoctions, suspensions, infusions, etc.). Such particles may cause obstruction of the suction hose and the nozzle.
- Oil-containing solutions. Oil is an organic solvent and its use may have eroding effect on the suction hose and components of the appliance.
- Antiseptic solutions (potassium permanganate, miramistin and other antiseptic drugs).
- Common mouth rinse solutions.
- Salt solutions, toothpaste or chemical substances.

#### Allowed for oral irrigation:

- Clean luke water (up to 40 °C). Use filtered water if you have poor quality tap water in your region.
- Special rinses for use with irrigator (always mixed in a definite ratio with water. For recommended proportions refer to the rinse manufacturer's instructions).

**⚠ CAUTION!** If special solutions for irrigator are applied, be sure to clean the device with fresh luke water after using such: fill in the water tank with water and run an extra irrigation cycle, by draining the appliance through the nozzle. Pay close attention to the expiry dates of permitted solutions. Never use outdated solutions.

#### ⚠ CAUTION!

- The appliance has built-in batteries. Avoid throwing it into fire, heating, charging, using or leaving the unit in locations with high air temperature.
- Never use the inductive charger with damaged cord or power plug.

#### ⚠ PRECAUTIONS:

- Do not leave or store the device and the contactless charger where it may fall or get into the bathtub, sink or toilet bowl. This may result in electric shock or fire.
- Do not submerge the irrigator into water.
- Do not use the appliance if the charger or its power cord is damaged or not properly connected. This may result in electric shock, short circuit or fire. It shall be replaced by the manufacturer or a qualified service agent.
- Do not break, bend, pull, or twist the power cord or apply excessive force on it. Moreover, do not place heavy objects on the power cord, and do not place the power cord between such objects. This may result in electric shock or fire.
- Do not immerse the contactless charger in water or wash it with water. This may result in electric shock or short circuit.
- Do not insert or disconnect the contactless charger from the power outlet with wet hands. This may result in electric shock.
- Store the appliance out of reach of children. The failure to observe the rule may result in accidents and hazardous situations, for instance, accidental swallowing of the accessories or detachable parts of the unit by a child.
- Regularly clean the contactless charger, so it does not collect dust. Failure to observe this precaution could result in fire due to insulation failure caused by humidity and dust accumulation.
- Always check that the contactless charger is connected to a power source with the appropriate rated voltage. Failure to do so may result in electric shock or fire.
- Do not disassemble or repair the instrument yourself. This could result in fire, electric shock, or personal injury.
- For repairs (such as battery replacement) contact Authorised B.Well Service and Support Centre.
- Do not store the unit where it can fall and break into pieces (e.g. on a sink).
- Do not use the appliance with lost nozzles.

#### ⚠ WARNING:

- Children and persons who cannot independently operate the device, as well as persons with a weakened sensitivity of the oral cavity, should not use this device. Failure to do so may result in personal injury. This appliance can be used by children aged from 8 years and above and persons with reduced physical, sensory or mental capabilities or lack of experience and knowledge if they have been given supervision or instruction concerning use of the appliance in a safe way and understand the hazards involved.
- Use the device exclusively for cleaning the oral cavity. The high-pressure water jet directed into the eyes, nose, ears, or throat can cause serious injury. Before using this device for treatment of the oral cavity or by persons with severe periodontal disease, consult a dentist.
- The people who suffer from tooth or gum ache cannot use the irrigator in all cases. Seek for dentist's advice.
- During use, do not press the nozzle tightly to teeth or gums, since it may cause harm.
- Never pour in the tank the water with temperature above 40°C.
- When disconnecting the contactless charger from a power outlet, always grasp the power plug, not the cord. Failure to do so may result in electric shock, short circuit, or fire.
- Keep the appliance clean, use only fresh and luke tap water for mouth cleaning. Some types of liquids may do damage to the appliance. Therefore, never use liquids from the forbidden list for irrigation.
- After using the appliance, make sure to pour out the remaining water from the water tank and turn on the appliance for 2–3 seconds to completely drain it. In the case of non-compliance with sanitary standards of the use of the device, mold and bacteria can develop in it, which can be harmful to health. It can also lead to unpleasant odors and malfunctions.

### 2. INTENDED USE

The oral irrigator TH-912 with accessories is designed for:

- Comprehensive care and hygiene support for oral cavity and interdental spaces
- Care for oral cavity of persons using dental bridges, implants, crowns, and braces.
- Cleansing and massage of gums.

It is intended for private use.

#### Contraindications:

- Before using the irrigator, it is recommended to consult a dentist in case of surgical intervention in the oral cavity and in the stage of exacerbation of chronic diseases of the oral cavity.
- During the first few uses of the irrigator, slight bleeding of the gums may occur.
- In case of healthy gums, any bleeding of the gums should stop within 1–2 weeks.
- If you experience gum bleeding after 2 weeks of use, stop using the irrigator and consult the dentist.

### 3. SCOPE OF SUPPLY

#### Oral Irrigator TH-912

#### Delivery contents:

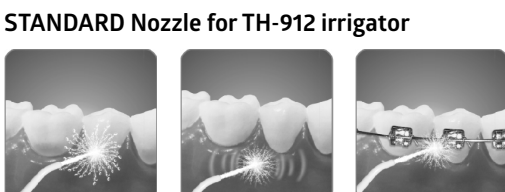
- Oral irrigator
- 2 standard nozzles
- Orthodontic nozzle – 1 pc.
- Tongue cleaning nozzle – 1 pc.
- Periodontal nozzle (for gums) – 1 pc.
- Water tank 150 ml
- Filter – 1 pc.
- Suction tube – 1 pc.
- Wall fixation set (set of screws and wall dowels)
- Storage bag – 1 pc.
- Contactless charger – 1 pc.
- User's Manual – 1 pc.
- Warranty card – 1 pc.
- Box – 1 pc.

**⚠ Note:** There may be moisture inside the water tank or suction hose at the time of purchase. This is moisture left from the distilled water used for product testing and is safe for humans.

#### Accessories to B.Well TH-912 irrigator (sold separately):

#### Nozzles sets:

#### STANDARD Nozzle for TH-912 irrigator

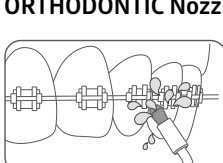


Designed to clean the interdental spaces from bacteria and food particles. Recommended period of use before replacement – 6 months.

#### ⚠ IMPORTANT:

For personal hygiene, each family member should use his/her own nozzle. For this purpose nozzles are marked with different colors.

#### ORTHODONTIC Nozzle for TH-912 irrigator



Ideal for cleaning bridges, braces and crowns. Effectively clean all components of artificial structures. Recommended period of use before replacement – 6 months.

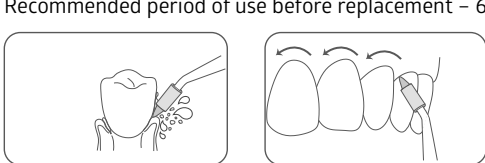
#### TONGUE CLEANING Nozzle for TH-912 irrigator



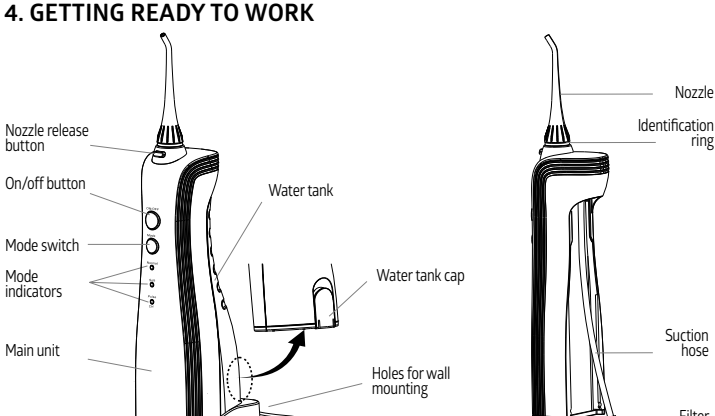
Suitable for daily tongue cleaning. Remove bacterial plaque and freshen breath. Recommended period of use before replacement – 6 months.

#### PERIODONTAL Nozzle for TH-912 irrigator

Designed for cleaning gum margin and gingival pockets, as well as for cleaning denture surface under prosthesis and bridges. Recommended period of use before replacement – 6 months.



### 4. GETTING READY TO WORK



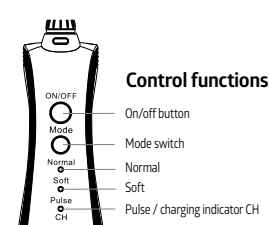
Press On/off button to switch the appliance on/off. Press Mode button to select the desired water jet mode (normal, soft, pulse). The mode selected will be shown by the mode indicator. If you want to use a different mode, press the mode switch until it changes to the desired setting. Pressing the mode switch will change the mode from Normal to Soft and Pulse.

#### Mode and its indicator

- The mode switch (pressing it will change the water jet setting and lighting of the relevant mode indicator).
- Normal** – effective oral cleaning.

- Soft** – careful cleaning for sensitive teeth and gums.
- Pulse** – cleaning and massaging of gums.

**ⓘ Note:** When you use the device for the first time, press the On/Off button to turn it on and test each of the water jet modes with the tank filled with water.



### 5. APPLIANCE WALL FIXATION

If necessary, the irrigator can be attached to wall.

The set of screws and dowels is included.

Mounting holes are located on the back of the charger.

- Measure the distance between the holes and drive dowels and screws into the marked points on the wall.
- Attach the charger to the screws driven into the wall.
- Additionally, check that the wall fixation is secure.

### 6. DEVICE CHARGING

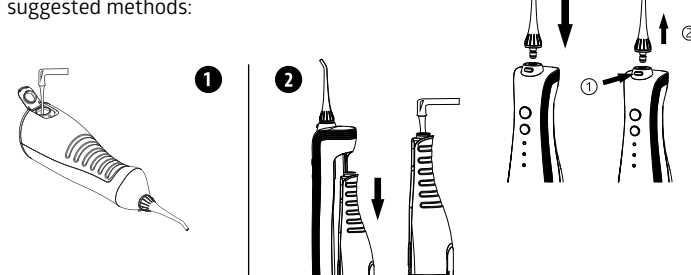
- Connect the contactless charger to the mains.
- Place the irrigator on the contactless charger.
- The "CH" indicator. Flashes during charging of the irrigator, when the device is fully charged, the "CH" indicator will turn off.
- When charging is complete, unplug the contactless charger from the mains.

**ⓘ Note:** if CH indicator keeps flashing during and after the procedure, it means the irrigator battery needs to be charged.

It takes about 24 hours to fully charge the battery.

### 7. USING THE APPLIANCE

- Attach the nozzle into the relevant recess of the main unit. To extract the nozzle, press the nozzle release button and pull the nozzle upwards.
- Fill in the tank with water by any one of the suggested methods:

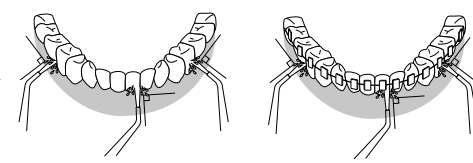


Open the water tank cap, hold the main unit so it is level, and fill the tank with water at temperature of 40°C or less. Close the cap, making sure it locks tightly.

Remove the water tank, while holding the main unit upright. Fill the tank with water at temperature of 40°C or less and reinsert the tank into the appliance.

#### ⚠ CAUTION! Never use a water-filled irrigator without the nozzle, which may cause device malfunction.

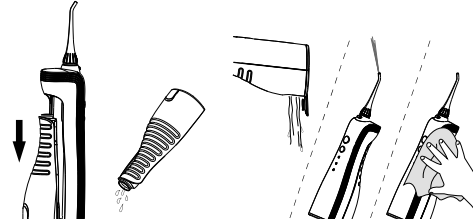
- Use only fresh tap water at all times.
- Never pour solutions from the forbidden list, specified in the beginning of the instructions, Section 1, Safety Precautions.
- To ensure trouble-free operation make sure the irrigator is turned off when the tank is being filled with water.
- Do not operate the appliance without water, save where pouring out any remaining water after use. Operating the appliance without water may result in a malfunction.
- Before turning on the device, place the irrigator nozzle into the oral cavity. Stand over the sink, bend down and hold the device strictly in an upright position, directing the nozzle to the teeth and gums. Do not press the ON/OFF button until you insert the nozzle into your mouth. Begin treatment from the back of the jaw, stopping at the interdental spaces for better disinfection. Continue until all areas around and between the teeth are clean. If you turn the device upside down, the suction of water from the tank will stop. To prevent splashing, cover your mouth slightly during irrigation.
- The device starts to work in the previously selected mode. To change the operating mode press the mode selector. The operating time of the device with a fully filled water tank varies from 40 to 100 seconds, depending on the selected operating mode. Keep your mouth slightly open so that water can flow out.
- Direct the jet as perpendicularly as possible into the interdental space or the dento-gingival junctions. Slowly move the device along the dental arch. Particular attention must be paid to the processing of the interdental space and the area around the braces. For best results, start with the molar area (posterior teeth), moving slowly to the front teeth. Move the device along the gums, pausing at the interdental spaces. Continue until all areas around and between the teeth are fully cleansed. But remember that oral irrigation is not a substitute for brushing your teeth. Brush your teeth or dentures after eating for at least five minutes, and then use this device.



- After use, press the ON/OFF button to turn the irrigator off and remove the irrigator from the oral cavity.
- For ease of use, you can rotate the attachment at an angle of 360° around its axis.

### 8. AFTER USE

- Without detaching the irrigator nozzle, open the water tank cap or detach the tank and drain water.
- Turn on the appliance for a few seconds to drain the remaining water.
- Wipe the irrigator with a dry cloth.



#### ⓘ NOTE:

- Always drain the remaining water. This will help prevent contamination and growth of bacteria in water that remained in the device.
- If you intend not to use the device for a long time, do not forget to wipe out and dry the appliance before storage.

### 9. CARE AND CLEANING

#### Cleaning

Turn off the device, detach the water tank and the nozzle. When washing, never use water with temperature above 50°C. Use only water or PH neutral detergents to clean the device. Never use caustic soda or abrasives for cleaning since those can damage it.

#### Main Unit

Use a patch of cloth to clean the main unit. Use liquid soap or water to remove hard-to-reach dirt. Use only PH neutral detergents. Never use caustic and abrasive substances (e.g. vinegar or lime scale solvents), since it may do harm to the appliance.

- Never immerse the main unit into water.
- After washing, wipe the main unit dry with a cloth.
- If the irrigator is used with any solution, it shall always be rinsed each time after use. For the above purpose fill the water tank with warm water and turn the device on, direct the irrigator attachment downwards into the sink, and then wipe the device dry.

#### Water tank

- Rinse the tank with water.
- After cleaning drain water from the tank.
- If you do not intend to use the appliance for a week or longer, dry the tank from the inside and outside.
- Use only soft PH neutral detergent for cleaning.

#### Nozzle

Wash the nozzles with water each time after use.

#### Suction hose

- Rinse with water, wipe out with a soft cloth.
- Do not bend, pull or twist.

### 10. POTENTIAL PROBLEMS

Problem	Cause	Remedy
Irrigator does not operate	You have just purchased the appliance or it has not been used for more than 3 months	Charge the battery for 24 hours
Irrigator can be used only for several minutes, even after charging	The battery duty cycle is about to end	Contact the service centre
	The battery is insufficiently charged	Charge the battery for 24 hours
Low water pressure	The nozzle is clogged	Replace the nozzle
	The nozzle is distorted	Replace the nozzle
	The filter is clogged	Clean the filter
	The battery is insufficiently charged	Charge the battery for 24 hours
Water does not come from nozzle	The water tank is empty	Pour water into the tank
	Wrong position of the appliance	Use the main unit in upright position

### 11. BATTERY AND APPLIANCE DISPOSAL

Upon expiry of the appliance operating life and prior to disposal be sure to remove the batteries. Do not forget the eye and hand protection while removing the battery. Dispose of the battery separately from the main electronic unit. In case of questions related to battery removal from the electronic unit, please contact the service centre or call the helpline.

#### Environmental protection and recycling:

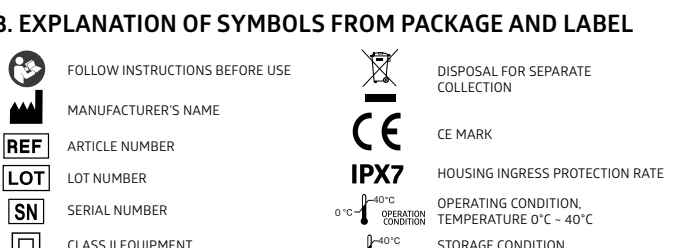
The appliance is fitted with lithium-ion batteries. Please make sure that the battery is disposed of at an officially designated location, if there is one in your country. Do not disassemble or replace batteries to keep using the device. Have them replaced only at an authorised service centre. The appliance shall be disposed of subject to the applicable standards instead of discarding as a household waste.

### 12. SPECIFICATIONS

Battery charging time:	≈24 hours
Battery operating life:	up to 500 cycles (charge/discharge)
Battery type:	Li-ion DC 3.7 V
Run time in one charge:	≈ 60 minutes
Contactless charger:	100–240 V, 50/60 Hz
Power consumption:	0.7–1.7 W
Dimensions (W × D × H):	56 × 79 × 195 mm
Charger (adapter):	Inductive charging (No adaptor)
Weight:	Contactless charger – 176 g Main unit – 282 g
Water tank capacity:	150 ml
Operating time with full tank:	*Normal* operation mode – 40–60 s. *Soft* operation mode – 85 s. *Pulse* operation mode – 100 s.
Water jet pulse rate:	1420 pulses per minute
Minimal/maximal jet pressure:	378-720 kPa
Auto power off:	after 2 minutes of operation
Storage conditions:	Temp.: -10°C to +40°C, RH 85% or less.
Operation conditions:	Temp.: 0°C to +40°C, RH 85% or less.

Protect the appliance from falling and shocks. Keep the device away from high temperatures, avoid direct sunlight.

### 13. EXPLANATION OF SYMBOLS FROM PACKAGE AND LABEL



The appliance production date is coded in its label, in the serial number (SN): the first two digits mean the week of manufacture, the second two figures – the year of manufacture.

### 14. APPLIED STANDARD

The submitted sample of the above equipment has been tested for CE marking a European Directive and following standards:

- Low Voltage Directive 2014/35/EU
- Electromagnetic Compatibility Directive 2014/30/EU.

### 15. WARRANTY INFORMATION

Warranty period is 2 years from the date of purchase for device and 6 months for standard nozzles. This warranty doesn't cover any damages caused by improper using. When a manufacturing defect is revealed during the warranty period a faulty unit would be repaired or, if repairing is impossible, replaced with another one. The warranty does not cover components and consumables subject to wear and batteries, bags, and package of the item.

Last revision 2022-W49

**B.Well Swiss AG**  
Bahnhofstrasse, 24,  
9443 Widnau, Switzerland