

WI-911

ORAL IRRIGATOR



EN Operating Instructions

Thank you for purchasing WI-911 oral irrigator from B.Well. The appliance is helpful for effective cleaning of space between teeth and plaque removal. It precludes dental tartar occurrence and is perfect for prevention of caries and periodontal diseases. WI-911 oral irrigator is a small unit for oral care if you have dental bridges, implants, crowns and brackets. It can also be used for gum massage that improves blood circulation and promotes gum healing. Three operating modes ensure the maximum efficiency of the unit.

1. SAFETY PRECAUTIONS

ⓘ WARNING!

Never use the following as solutions for oral irrigation:

- Substances and solutions containing suspended particles (decoctions, suspensions, infusions, etc.). Such particles may cause obstruction of the suction hose and the nozzle. Oil-containing solutions. Oil is an organic solvent and its use may have eroding effect on the suction hose and components of the appliance.
- Antiseptic solutions (potassium permanganate, miramistin and other antiseptic drugs).
- Common mouth rinse solutions.
- Salt solutions, toothpaste or chemical substances.

Allowed for oral irrigation:

- Clean luke water (up to 40 °C). Use filtered water if you have poor quality tap water in your region.
- Special rinses for use with irrigator (always mixed in a definite ratio with water. For recommended proportions refer to the rinse manufacturer's instructions).

ⓘ CAUTION! If special solutions for irrigator are applied, be sure to clean the device with fresh luke water after using such: fill in the water tank with water and run an extra irrigation cycle, by draining the appliance through the nozzle. Pay close attention to the expiry dates of permitted solutions. Never use outdated solutions.

ⓘ CAUTION!

- The appliance has built-in batteries. Avoid throwing it into fire, heating, charging, using or leaving the unit in locations with high air temperature.
- Never use the adapter with damaged cord or power plug.

⚠ PRECAUTIONS:

- Do not use the appliance with the charging adapter in the bath or in the shower. Never leave, nor keep the charging adapter where it can fall or get into a bathtub, a sink or a WC pan. This may result in electrocution or fire.
- Do not try to reach an irrigator that has fallen into water, unplug first.
- Do not submerge the irrigator into water.
- Never use the appliance with damaged charging adapter, or if the power cord is loosely connected to the power socket. This may result in electrocution, short-circuit or fire.
- Never break, bend, pull or twist the power cord with excessive force. Do not place heavy objects onto the power cord and do not place the cord between such objects. This may result in electrocution or fire. Do not submerge the charging adapter into water, and never wash it with water. This may result in electrocution or short-circuit.
- Never plug in / disconnect the adapter from the power socket with wet hands. This may result in electrocution.
- Store the appliance out of reach of children. The failure to observe the rule may result in accidents and hazardous situations, for instance, accidental swallowing of the accessories or detachable parts of the unit by a child.
- During maintenance, plug the charging device out of the power socket. The failure to observe this may result in electrocution.
- Regularly clean the power plug and the charging adapter to avoid dust ingress on them. The failure to observe the rule may result in fire due to damaged insulation cause by humidity and dust accumulation.
- At all times check that the device works from a power source with the relevant rated voltage. The failure to observe the rule may result in electrocution or fire.
- Never modify the appliance, disassemble or repair it on your own. This may result in fire, electrocution or an injury. If repair is needed (for instance, to replace a battery) contact the authorised service centre of B.Well.
- Do not store the unit where it can fall and break into pieces (e.g. on a sink).
- Do not use the appliance with lost nozzles.
- Do not use the appliance connected to the power socket.

⚠ WARNING:

- Children and persons who are unable to operate the device, and people with weak oral cavity senses should not use the appliance. The failure to observe the rule may result in injuries.
- Store the nozzles out of reach of children, due to swallowing hazard.
- Use the appliance solely to clean the mouth. The jet of water directed to eyes, nose, ears or throat may cause a serious injury. Be sure to contact a dentist prior to using the device in case of having your teeth treated and severe parodontosis.
- The people who suffer from tooth or gum ache cannot use the irrigator in all cases. Seek for dentist's advice.
- During use, do not press the nozzle tightly to teeth or gums, since it may cause harm. Never pour in the tank the water with temperature above 40°C.
- Always disconnect the charging adapter from the power socket, holding the former onto the plug, rather than the cord. The failure to observe the rule may result in electrocution, short-circuit or fire.
- Keep the appliance clean, use only fresh and luke tap water for mouth cleaning. Some types of liquids may do damage to the appliance. Therefore, never use liquids from the forbidden list for irrigation.
- After use never forget to drain the remaining water from the tank and operate the appliance for 2-3 seconds until no more water appears. If no health and hygiene rules are observed, this may result in growth of fungi and bacteria, which are harmful for health. This may also cause odour and malfunctions to originate.
- The appliance is not intended for use by children or persons with reduced physical, sensing or mental capabilities, or persons without relevant expertise, unless they are supervised by a person responsible for their safety, and provided they have been given precise use instructions. Be sure the appliance is not within reach of children for play.

2. INTENDED USE

WI-911 oral irrigator with accessories is intended to prevent:

- gum bleeding, caries, periodontal diseases, gingivitis, periimplant pathology; medicated irrigation and massaging of the oral mucosa;
- for effective cleaning of orthodontic systems, and for care of oral cavity and space between teeth.
- It is intended for private use.

3. SCOPE OF SUPPLY

- Oral irrigator
- standard nozzles
- Water tank
- Charger (adapter)
- Battery kit (a cell)
- Operating instructions
- Warranty card
- Box

ⓘ Note: There may be moisture inside the water tank or suction hose at the time of purchase. This is moisture left from the distilled water used for product testing and is safe for humans.

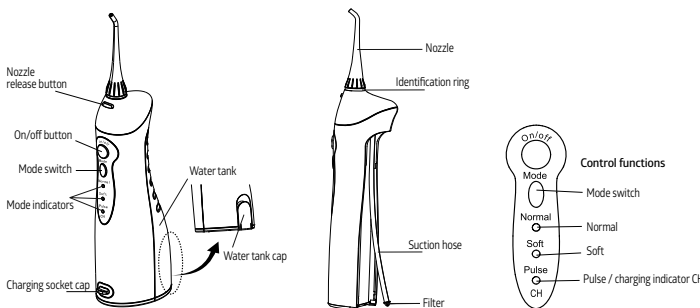
STANDARD NOZZLES for WI-911 irrigator



Clean space between teeth from bacteria and food particles. Effectively massage gums. Suitable for cleaning bridges, implants, crowns and brackets.

Recommended replacement interval is 6 months.

4. GETTING READY TO WORK



Press On/off button to switch the appliance on/off. Press Mode button to select the desired water jet mode (normal, soft, pulse). The mode selected will be shown by the mode indicator. If you want to use a different mode, press the mode switch until it changes to the desired setting. Pressing the mode switch will change the mode from Normal to Soft and Pulse.

Mode and its indicator

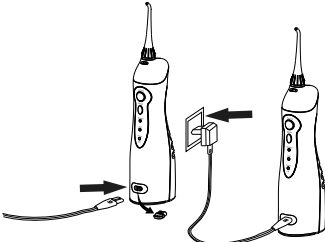
- The mode switch (pressing it will change the water jet setting and lighting of the relevant mode indicator).
- Normal – effective oral cleaning.
- Soft – careful cleaning for sensitive teeth and gums.
- Pulse – cleaning and massaging of gums.

ⓘ Note: When you use the device for the first time, press the On/Off button to turn it on and test each of the water jet modes with the tank filled with water.

5. CHARGING THE APPLIANCE

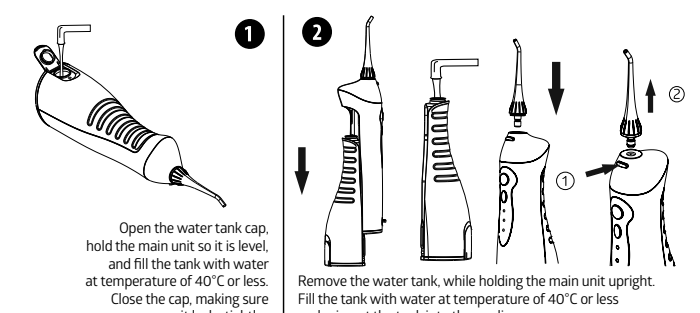
- Plug the adapter cord into the irrigator charging socket and connect the adapter to a power socket (make sure no moisture is inside the irrigator socket).
- CH indicator will flash while the irrigator is charging; once the appliance is charged, CH indicator will be lit continuously.
- Close the charging socket with a cap after the charging is complete.

ⓘ Note: if CH indicator keeps flashing during and after the procedure, it means the irrigator battery needs to be charged. Battery charging is completed in some 8 hours.



6. USING THE APPLIANCE

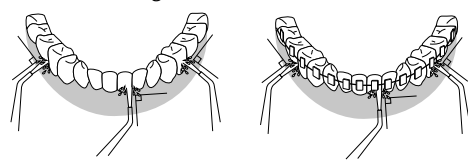
- Attach the nozzle into the relevant recess of the main unit. To extract the nozzle, press the nozzle release button and pull the nozzle upwards.
- Fill in the tank with water by any one of the suggested methods:



ⓘ CAUTION! Never use a water-filled irrigator without the nozzle, which may cause device malfunction.

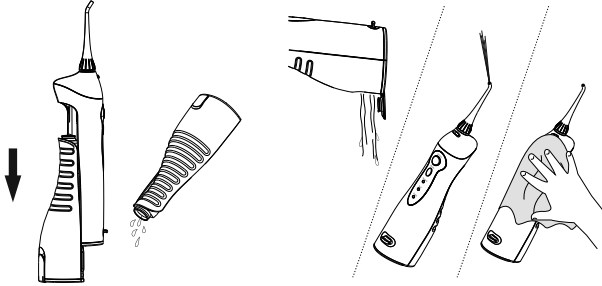
- Use only fresh tap water at all times.
 - Never pour solutions from the forbidden list, specified in the beginning of the instructions, Section 1, Safety Precautions.
 - To ensure trouble-free operation make sure the irrigator is turned off when the tank is being filled with water.
 - Do not operate the appliance without water, save where pouring out any remaining water after use. Operating the appliance without water may result in a malfunction.
- Before pressing the power switch place the nozzle into your mouth. Bend over a washbasin, and hold the appliance upright at the same directing the nozzle onto the teeth. Slightly close your mouth during irrigation to prevent splashing.
 - The device starts working in the preselected mode. Pressing the mode switch during use will change the mode. A fully filled water tank provides 40 to 60 seconds of use. Hold the mouth slightly open for the water to pour out.

- Direct the jet as more perpendicular into the space between the teeth or the gingival crevice as possible. Slowly shift along the teeth. Pay particular attention to cleaning of the interdental space and the area around brackets. For better results start cleaning from the molars (back teeth), gradually shifting to front teeth. Follow along gums, stopping around gaps between teeth. Continue until all zones around and between the teeth are fully cleaned. Always keep in mind that the oral irrigation would never replace tooth brushing. Clean your teeth or artificial denture for at least five minutes after meals, and then use this device.
- After use, press On/off button to turn off the irrigator and remove it from the mouth.



7. AFTER USE

- Without detaching the irrigator nozzle, open the water tank cap or detach the tank and drain water.
- Turn on the appliance for a few seconds to drain the remaining water.
- Wipe the irrigator with a dry cloth.



ⓘ NOTE:

- Always drain the remaining water. This will help prevent contamination and growth of bacteria in water that remained in the device.
- If you intend not to use the device for a long time, do not forget to wipe out and dry the appliance before storage.

8. CARE AND CLEANING

Cleaning

Turn off the device, detach the water tank and the nozzle. When washing, never use water with temperature above 50°C. Use only water or PH neutral detergents to clean the device. Never use caustic soda or abrasives for cleaning since those can damage it.

Main Unit

Use a patch of cloth to clean the main unit. Use liquid soap or water to remove hard-to-reach dirt. Use only PH neutral detergents. Never use caustic and abrasive substances (e.g. vinegar or lime scale solvents), since it may do harm to the appliance.

- Never immerse the main unit into water.
- After washing, wipe the main unit dry with a cloth.

Water tank

- Rinse the tank with water.
- After cleaning drain water from the tank.
- If you do not intend to use the appliance for a week or longer, dry the tank from the inside and outside.
- Use only soft PH neutral detergent for cleaning.

Nozzle

- Rinse with water and wipe out with a soft cloth.
- The recommended nozzle replacement interval is 6 months.

Suction hose

- Rinse with water, wipe out with a soft cloth.
- Do not bend, pull or twist.

9. POTENTIAL PROBLEMS

| Problem | Cause | Remedy |
|---|--|---------------------------------------|
| Irrigator does not operate | You have just purchased the appliance or it has not been used for more than 3 months | Charge the battery for 8 hours |
| Irrigator can be used only for several minutes, even after charging | The battery duty cycle is about to end | Contact the service centre |
| | The battery is insufficiently charged | Charge the battery for 8 hours |
| Low water pressure | The nozzle is clogged | Replace the nozzle |
| | The nozzle is distorted | Replace the nozzle |
| Water does not come from nozzle | The filter is clogged | Clean the filter |
| | The water tank is empty | Pour water into the tank |
| | Wrong position of the appliance | Use the main unit in upright position |

10. BATTERY AND APPLIANCE DISPOSAL

Upon expiry of the appliance operating life and prior to disposal be sure to remove the batteries. Do not forget the eye and hand protection while removing the battery. Dispose of the battery separately from the main electronic unit. In case of questions related to battery removal from the electronic unit, please contact the service centre or call the helpline.

Environmental protection and recycling:

The appliance is fitted with lithium-ion batteries. Please make sure that the battery is disposed of at an officially designated location, if there is one in your country. Do not disassemble or replace batteries to keep using the device. Have them replaced only at an authorised service centre. The appliance shall be disposed of subject to the applicable standards instead of discarding as a household waste.

11. SPECIFICATIONS

| | |
|--------------------------------|---|
| Battery charging time: | ≈ 8 hours |
| Battery operating life: | up to 1000 cycles (charge/discharge) |
| Battery type: | Li-ion |
| Run time in one charge: | ≈ 70 minutes |
| Rated voltage: | 100-240 V, 50/60 Hz |
| Charger (adapter): | 5.0 V 600 mA |
| Dimensions (w × h × d): | 55 × 195 × 70 mm |
| Weight: | main unit – 253 g, charger (adapter) – 65 g |
| Water tank capacity: | 150 ml |
| Operating time with full tank: | 40-60 seconds, depending on operating mode |
| Water pulse frequency: | 1600 pulses per minute |
| Minimum/maximum jet pressure: | 275-620 kPa |
| Auto power off: | in 2 minutes of running |
| Storage conditions: | from -10°C to +40 °C, R.H. 85% max. |
| Use conditions: | from 0°C to 40 °C, R.H. 85% max. |

Protect the appliance from falling and shocks. Keep the device away from high temperatures, avoid direct sunlight.

12. EXPLANATION OF SYMBOLS FROM PACKAGE AND LABEL

| | | | |
|--|--------------------------------|--|---|
| | FOLLOW INSTRUCTIONS BEFORE USE | | DISPOSAL FOR SEPARATE COLLECTION |
| | MANUFACTURER'S NAME | | CE MARK |
| | ARTICLE NUMBER | | HOUSING INGRESS PROTECTION RATE |
| | LOT NUMBER | | OPERATING CONDITION, TEMPERATURE 0°C – 40°C |
| | SERIAL NUMBER | | STORAGE CONDITION, TEMPERATURE -10°C – 40°C |
| | CLASS II EQUIPMENT | | |

The appliance production date is coded in its label, in the serial number (SN): the first two digits mean the week of manufacture, the second two figures – the year of manufacture.

13. APPLIED STANDARD

The submitted sample of the above equipment has been tested for CE marking a European Directive and following standards:

- Low Voltage Directive 2014/35/EU
- Electromagnetic Compatibility Directive 2014/30/EU.

14. WARRANTY INFORMATION

Warranty period is 2 years from the date of purchase for device and 6 months for standard nozzles. This warranty doesn't cover any damages caused by improper using. When a manufacturing defect is revealed during the warranty period a faulty unit would be repaired or, if repairing is impossible, replaced with another one. The warranty does not cover components and consumables subject to wear and batteries, bags, and package of the item.

Last revision 2020-W50

B.Well Swiss AG
Bahnhofstrasse 24, 9443 Widnau, Switzerland
www.bwell-swiss.ch