

## PRO-911

ORAL IRRIGATOR

### EN Operating Instructions

Thank you for purchasing PRO-911 oral irrigator from B.Well. The device effectively cleans the spaces between teeth and removes plaque. It precludes dental tartar occurrence and is perfect for prevention of tooth decay and periodontal diseases. PRO-911 oral irrigator is a necessary device for oral care if you have dental bridges, implants, crowns and braces. It can also be used for gum massage that improves blood circulation and promotes gum healing. Three operating modes ensure the maximum efficiency of the unit.

#### 1. SAFETY PRECAUTIONS

- ⚠ WARNING!** Never use the following as solutions for oral irrigation:
  - Substances and solutions containing suspended particles (decoctions, suspensions, infusions, etc.). Such particles may cause obstruction of the suction hose and the nozzle
  - Oil-containing solutions. Oil is an organic solvent and its use may have eroding effect on the suction hose and components of the device.
  - Solutions that contains aggressive chemicals (such as potassium permanganate, iodine and other)
  - Toothpaste.
  - Salt solutions.

**Allowed for oral irrigation:**

- Clean luke water (up to 40 °C). Use filtered water if you have poor quality tap water in your region.
- Special rinses for use with irrigator / common mouth rinse solution (always mixed in a definite ratio with water. For recommended proportions refer to the rinse manufacturer's instructions).
- Antiseptic solutions (chlorhexidine, miramistin and other antiseptic drugs proscribed by your physician).

**⚠ CAUTION!** If special solutions for irrigator / common mouth rinse solution are applied, be sure to clean the device with fresh luke water after using such: fill in the water tank with water and run an extra irrigation cycle, by draining the appliance through the nozzle.

- ⚠ CAUTION!**
  - The device has built-in batteries. Do not throw it into fire, don't heat, and don't charge, use or leave the device in locations with high air temperature.
  - Never use the adapter with damaged cord or power plug.
- ⚠ PRECAUTIONS:**
  - Do not use the device with the charging adapter in the bath or in the shower.
  - Never leave, nor keep the charging adapter where it can fall or get into a bathtub, a sink or a WC pan. This may result in electrocution or fire.
  - Do not try to reach an irrigator that has fallen into water, unplug first.
  - Do not submerge the irrigator into water.
  - Never use the device with damaged charging adapter, or if the power cord is loosely connected to the power socket. This may result in electrocution, short-circuit or fire.
  - Never break, bend, pull or twist the power cord with excessive force. Do not place heavy objects onto the power cord and do not place the cord between such objects. This may result in electrocution or fire.
  - Do not submerge the charging adapter into water, and never wash it with water. This may result in electrocution or short-circuit.
  - Never plug in or disconnect the adapter from the power socket with wet hands. This may result in electrocution.
  - Store the device out of reach of children. The failure to observe this rule may result in accidents and hazardous situations, for instance, accidental swallowing of the accessories or detachable parts of the unit by a child.
  - Regularly clean the power plug and the charging adapter to avoid dust ingress on them. The failure to observe this rule may result in fire due to damaged insulation cause by humidity and dust accumulation.
  - During maintenance, plug the charging device out of the power socket. The failure to observe this rule may result in electrocution.
  - Check that the device works from a power source with the relevant rated voltage everytime you use it. The failure to observe this rule may result in electrocution or fire.
  - Never modify the device, disassemble or repair it on your own. This may result in fire, electrocution or an injury. If repair is needed (for instance, to replace a battery) contact the authorised service centre of B.Well.
  - Do not store the unit where it can fall and break into pieces (e.g. on a sink).
  - Do not use the device without nozzles.
  - Do not use the device connected to the power socket.

- ⚠ WARNING:**
  - Children, people who are unable to operate the device, and people with weak oral cavity senses should not use the device. The failure to observe this rule may result in injuries.
  - Store the nozzles out of reach of children, due to swallowing hazard.
  - Use the device solely to clean the mouth. The jet of water directed to eyes, nose, ears or throat may cause a serious injury. Be sure to contact a dentist prior to using the device in case of having your teeth treated and severe periodontosis.
  - People with tooth or gum pain may not always be able to use the irrigator. Dentist consultation is recommended.
  - During use, do not press the nozzle tightly to teeth or gums, since it may cause harm.
  - Never pour in the tank the water with temperature above 40°C.
  - When unplugging the charger from the wall outlet, always grasp the power plug, not the cord. The failure to observe this rule may result in electrocution, short-circuit or fire.
  - Keep the device clean, use only fresh and luke tap water for mouth leaning. Some types of liquids may do damage to the device. Therefore, never use liquids from the forbidden list for irrigation.
  - After use never forget to drain the remaining water from the tank and operate the device for 2-3 seconds until no more water appears. If no health and hygiene rules are observed, this may result in growth of fungi and bacteria, which are harmful for health. This may also cause odour and malfunctions to originate.
  - Use the irrigator only with the charge-port closed using the charging cap. Failure to follow this rule may result in the device not working properly or charging the device.
  - The device is not intended for use by children or persons with reduced physical, sensing or mental capabilities, or persons without relevant expertise, unless they are supervised by a person responsible for their safety, and provided they have been given precise use instructions.
  - Be sure the device is not within reach of children for play.

#### 2. INTENDED USE AND CONTRAINDICATIONS

Oral irrigator model PRO-911 with accessories is used for the treatment and prevention of dental diseases, for hygiene and comprehensive oral care. The irrigator provides access to a stream of water or medicinal solution to any area of the oral cavity. Prevents the development of pathogenic microflora and inflammatory processes. Follow your doctor's instructions when using the irrigator.

**Purpose:**

Oral irrigator PRO-911 with accessories is intended for:

- treatment and prevention of diseases such as gingivitis, periodontitis, peri-implantitis, bleeding gums;
- medical irrigation and massage of the gum tissue and the entire oral mucosa;
- prevention of caries and tartar formation;
- comprehensive care of the oral cavity, including interdental spaces and gingival pockets;
- effective cleaning of orthodontic and orthopedic structures.

**Contraindications:**

Before using the irrigator it is recommended to consult a dentist in case of surgical intervention in the oral cavity and in case of exacerbation of chronic diseases of the oral cavity. During the first few applications of the irrigator there may be slight bleeding of the gums. If you have healthy gums, any bleeding of the gums should stop within 1-2 weeks. If the bleeding continues after 2 weeks, stop using the irrigator and consult your dentist. Do not use with open wounds on the tongue or in the mouth. Consult your physician if you take antibiotics.

#### 3. SCOPE OF SUPPLY

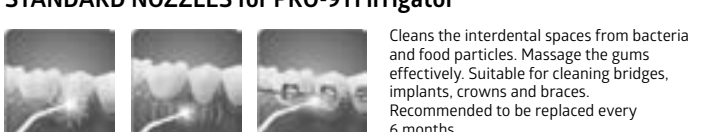
- Oral irrigator
- standard nozzles (2 pcs)
- Water tank
- USB cable
- Charging socket cap
- Waterproof handbag
- Operating instructions
- Warranty card
- Box

**⚠ NOTE:** There may be moisture inside the water tank or suction hose at the time of purchase. This is moisture left from the distilled water used for product testing and is safe for humans.

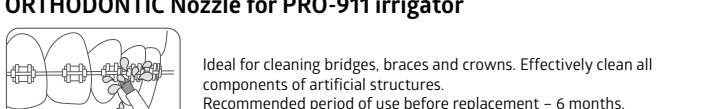
**For the B.Well PRO-911 irrigator, you can additionally purchase a set of nozzles:**

**⚠ IMPORTANT:** For personal hygiene, each family member should use his/her own nozzle. For this purpose nozzles are marked with different colors.

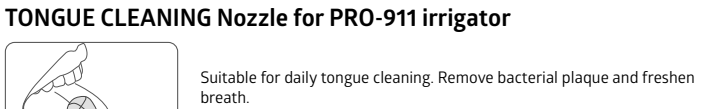
#### STANDARD NOZZLES FOR PRO-911 irrigator



#### ORTHODONTIC Nozzle for PRO-911 irrigator



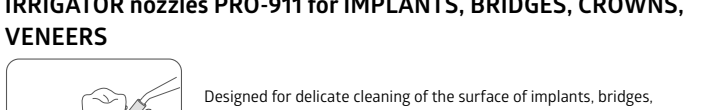
#### TONGUE CLEANING Nozzle for PRO-911 irrigator



#### PERIODONTAL Nozzle for PRO-911 irrigator



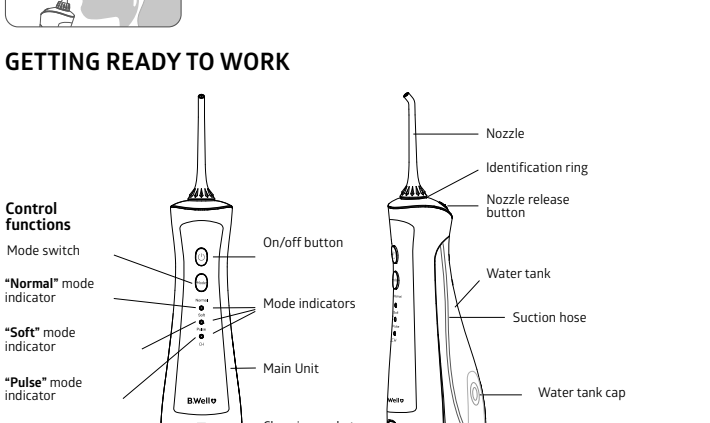
#### IRRIGATOR nozzles PRO-911 for IMPLANTS, BRIDGES, CROWNS, VENEERS



#### NASAL nozzle for PRO-911 irrigator



#### GETTING READY TO WORK



**⚠ NOTE:** The device must be charged before first use. Using the device while charging is prohibited.

Press On/off button to switch the device on/off. Press Mode button to select the desired water jet mode (normal, soft, pulse). The mode selected will be shown by the mode indicator. If you want to use a different mode, press the mode switch until it changes to the desired setting. Pressing the mode switch will change the mode from Normal to Soft and Pulse.

**⚠ NOTE:** When you use the device for the first time, press the On/Off button to turn it on and test each of the water jet modes with the tank filled with water.

**Mode description**

Switching the modes causes a change in the water jet pressure setting and is reflected on the side panel of the device by the respective mode indicator.

- Normal mode** is designed for effective oral cleansing, removal of food particles.
- Soft mode** is designed for gentle and delicate cleaning of sensitive teeth and gums.
- Pulse mode** is designed for cleaning and massage gums.
- CH/Charge.** While charging the irrigator, all indicators on the side panel will flash alternately. When the device has finished charging, all three indicators will light up continuously.

#### 5. CHARGING THE DEVICE

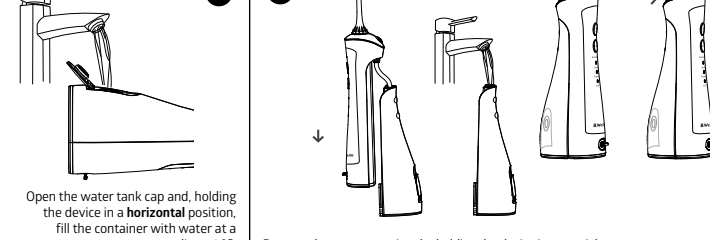
To charge the device, use the USB cable that is included in the set and the adapter that is not included after removing the cap for the charging socket. It is also possible to use other chargers (power banks). It is also possible to use other Micro USB chargers. Use only certified chargers with 5 V, 1000 mA DC output voltage.

While the irrigator is charging, all indicators on the side panel will flash alternately. When charging is complete, all of the three indicators will light up continuously. If the indicator flashes during the procedure, it means that the device must be recharged.

After charging is completed, close the charging socket with a cap.

#### 6. USING THE DEVICE

- Attach the nozzle into the relevant recess of the main unit. To extract the nozzle, press the nozzle release button and pull the nozzle upwards.
- Fill in the tank with water by any one of the suggested methods:

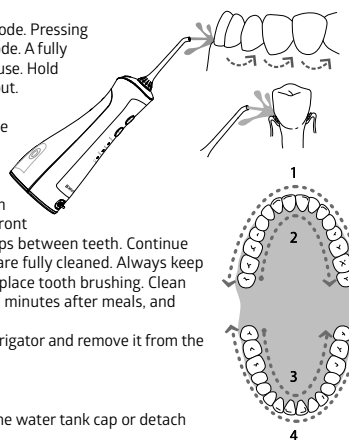


**⚠ CAUTION!** Never use a water-filled irrigator without the nozzle: it may cause device malfunction.

- Use only fresh tap water at all times. Never pour solutions from the forbidden list, specified in the beginning of the instructions, Section 1, Safety Precautions.
- To ensure trouble-free operation make sure the irrigator is turned off when the tank is being filled with water.

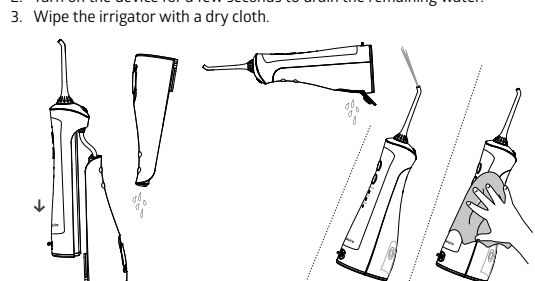
- Do not operate the device without water, save where pouring out any remaining water after use.
- Operating the device without water may result in a malfunction.

- Before pressing the power switch place the nozzle into your mouth. Bend over a washbasin, and hold the device upright at the same directing the nozzle onto the teeth. Slightly close your mouth during irrigation to prevent splashing.
- The device starts working in the preselected mode. Pressing the mode switch during use will change the mode. A fully filled water tank provides 40 to 60 seconds of use. Hold the mouth slightly open for the water to pour out.
- Direct the jet as more perpendicular into the space between the teeth or the gingival crevice as possible. Slowly shift along the teeth. Pay particular attention to cleaning of the interdental space and the area around brackets. For better results start cleaning from the molars (back teeth), gradually shifting to front teeth. Follow along gums, stopping around gaps between teeth. Continue until all zones around and between the teeth are fully cleaned. Always keep in mind that the oral irrigation would never replace tooth brushing. Clean your teeth or artificial denture for at least five minutes after meals, and then use this device.
- After use, press On/off button to turn off the irrigator and remove it from the mouth.



#### 7. AFTER USE

- Without detaching the irrigator nozzle, open the water tank cap or detach the tank and drain water.
- Turn on the device for a few seconds to drain the remaining water.
- Wipe the irrigator with a dry cloth.



**⚠ NOTE:**

- Always drain the remaining water. This will help prevent contamination and growth of bacteria in water that remained in the device.
- If you intend not to use the device for a long time, do not forget to wipe out and dry the device before storage.

#### 8. CARE AND CLEANING

**Cleaning**

Turn off the device, detach the water tank and the nozzle. When washing, never use water with temperature above 50°C. Use only water or PH neutral detergents to clean the device. Never use caustic soda or abrasives for cleaning since those can damage it.

**Main Unit**

Use a patch of cloth to clean the main unit. Use liquid soap or water to remove hard-to-reach dirt. Use only PH neutral detergents. Never use caustic and abrasive substances (e.g. vinegar or lime scale solvents), since it may do harm to the device.

- Never immerse the main unit into water.
- After washing, wipe the main unit dry with a cloth.

#### Water tank

- Rinse the tank with water.
- After cleaning drain water from the tank.
- If you do not intend to use the device for a week or longer, dry the tank from the inside and outside.
- Use only soft PH neutral detergent for cleaning.

#### Nozzle

- Rinse with water and wipe out with a soft cloth.
- The recommended nozzle replacement interval is 6 months.

#### Suction hose

- Rinse with water, wipe out with a soft cloth.
- Do not bend, pull or twist.

#### 9. POTENTIAL PROBLEMS

Problem	Cause	Remedy
Irrigator does not operate	You have just purchased the device or it has not been used for more than 3 months	Charge the battery for 24 hours before first use, and then for 4 hours.
Irrigator operates only for several minutes, even after charging	The battery duty cycle is about to end	Contact the service center
	The battery is insufficiently charged	Charge the battery for 24 hours before first use, and then for 4 hours.
Low water pressure	The nozzle is clogged	Replace the nozzle
	The nozzle is distorted	Replace the nozzle
	The battery of the irrigator is not sufficiently charged	Charge the battery for 24 hours
Water does not come from nozzle	The water tank is empty	Pour water into the tank
	Wrong position of the device	Use the main unit in upright position
There's water leakage between the nozzle and the device	The nozzle is not inserted correctly	Check if the nozzle is inserted correctly
When the device is used, water leaks	The sealer is damaged	Please contact the service and consulting center
	Incorrect use of the device	Use the device in strict accordance with this operating manual

#### 10. BATTERY AND DEVICE DISPOSAL

Upon expiry of the device operating life and prior to disposal be sure to remove the batteries. Do not forget the eye and hand protection while removing the battery. Dispose of the battery separately from the main electronic unit. In case of questions related to battery removal from the electronic unit, please contact the service center or call the helpline.

**Environmental protection and recycling:**

The device is fitted with lithium-ion batteries. Please make sure that the battery is disposed of at an officially designated location, if there is one in your country. Do not disassemble or replace batteries to keep using the device. Have them replaced only at an authorised service center. The device itself must be disposed of in accordance with applicable regulations and must not be disposed of with household wastes.

#### 11. SPECIFICATIONS

<b>Battery charging time:</b>	24 hours before first use, then within 4 hours.
<b>Battery operating life:</b>	up to 1000 cycles (charge/discharge)
<b>Battery type:</b>	Li-Ion
<b>Run time in one charge:</b>	= 60 minutes
<b>Dimensions (w × h × d):</b>	63 × 195 × 79 mm
<b>Product Weight:</b>	267 g
<b>Water tank capacity:</b>	150 ml
<b>Operating time with full tank:</b>	With standard mode: 40-60 sec With soft mode: 85 sec With massage mode: 100 sec
<b>Water pulse frequency:</b>	1400-1800 pulses per minute
<b>Minimum/maximum jet pressure:</b>	206.8-758 kPa
<b>Auto power off:</b>	in 2 minutes of running
<b>Storage conditions:</b>	from -16°C to +60°C, R.H. 85% max.
<b>Use conditions:</b>	from 16°C to 40°C, R.H. 85% max.

Protect the device from drops and strong shocks. Keep the device away from high temperature areas and avoid direct sunlight.

#### 12. EXPLANATION OF SYMBOLS FROM PACKAGE AND LABEL

FOLLOW INSTRUCTIONS BEFORE USE	DISPOSAL FOR SEPARATE COLLECTION	CLASS II EQUIPMENT	CE MARK	HOUSING INGRESS PROTECTION RATE

<b>SN</b>	<b>REF</b>			<b>LOT</b>
SERIAL NUMBER	ARTICLE NUMBER	OPERATING CONDITION, TEMPERATURE 16°C - 40°C	STORAGE CONDITION, TEMPERATURE -16°C - 60°C	LOT (for nozzles)

The device production date is coded in its label, in the serial number (SN): the first two digits mean the week of manufacture, the second two figures – the year of manufacture.

The nozzles production date is coded in its sticker, in the LOT: the first two digits mean the week of manufacture, the second two figures – the year of manufacture.

#### 13. APPLIED STANDARD

The submitted sample of the above equipment has been tested for CE marking a European Directive and following standards:

- Low Voltage Directive 2014/35/EU
- Electromagnetic Compatibility Directive 2014/30/EU.

#### 14. WARRANTY INFORMATION

Warranty period is 2 years from the date of purchase for device and 6 months for standard nozzles. This warranty doesn't cover any damages caused by improper using. When a manufacturing defect is revealed during the warranty period a faulty unit would be repaired or, if repairing is impossible, replaced with another one.

The warranty does not cover components and consumables subject to wear and batteries, bags, and package of the item.

Last revision 2023-W13

B.Well Swiss AG  
Bahnhofstrasse 24, 9443 Widnau, Switzerland  
www.bwell-swiss.ch

**B.Well**  
Caring for everyone